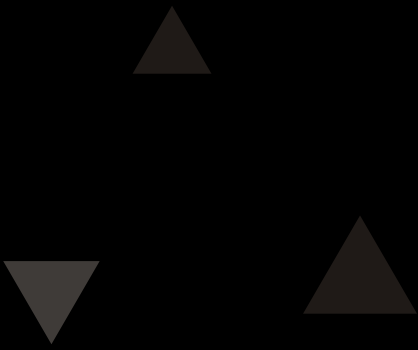
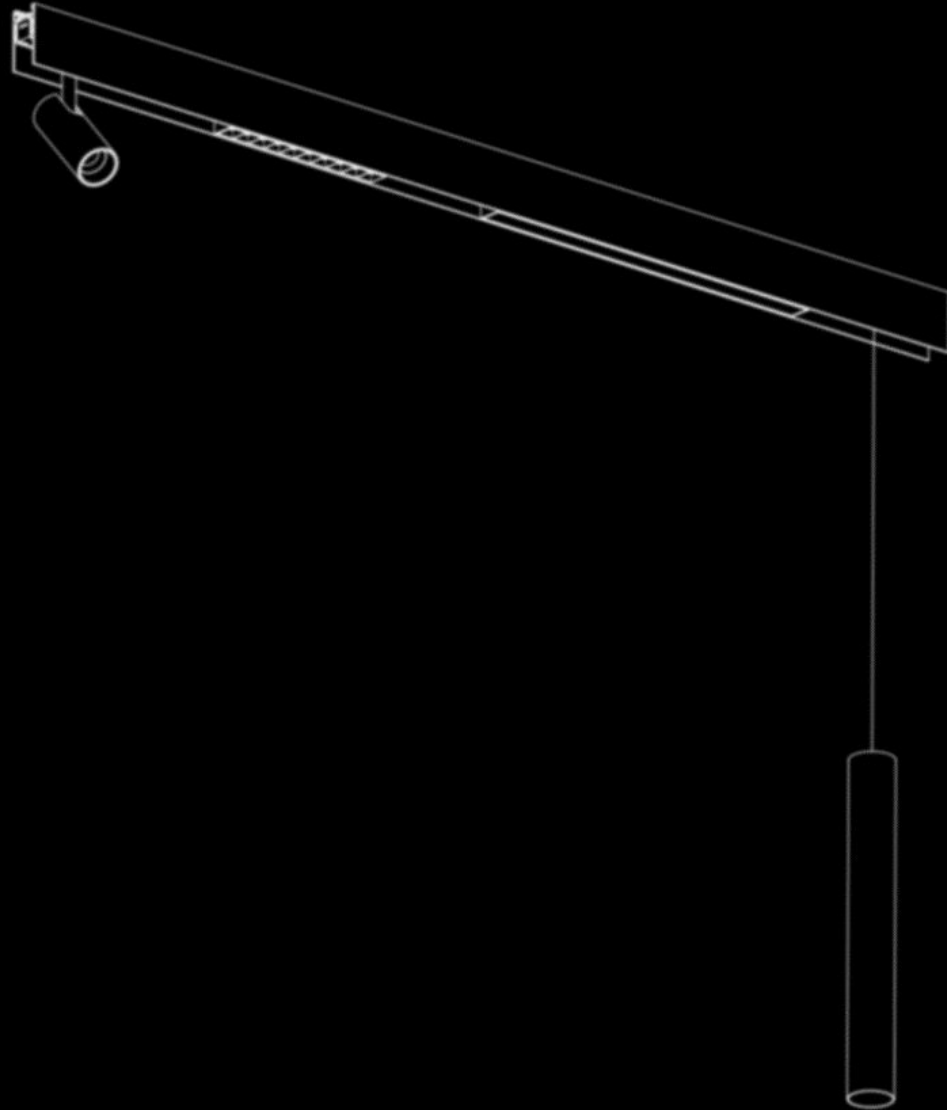


22

VOLUMM[®] NEXT
Next Generation Lighting

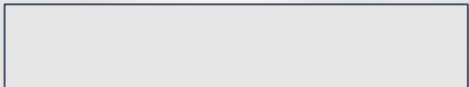


www.volummled.com



48V MAGNETIC TRACK

—SERIES —



IRON BAR (TRACK)



MAGNET (LAMP)
COPPER WIRE (TRACK)

TRACK 48V SURFACE

MAGNETIC TRACK

> 3M HEIGHT OF CEILING < 3M

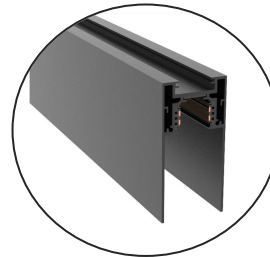
COMMERCIAL USE

—SERIES—

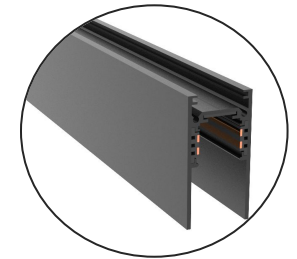
HOME USE

M35

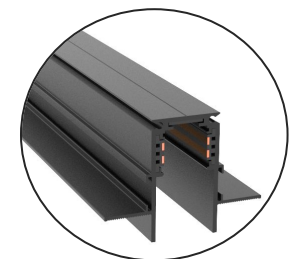
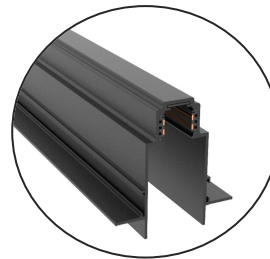
M20



SUSPENDED SURFACE



RECESSED



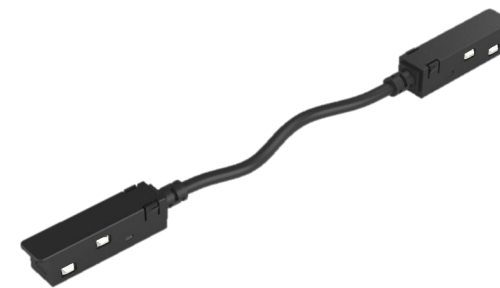
INPUT MODULE







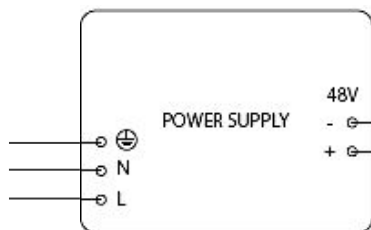
STRAIGHT CONNECT MODULE



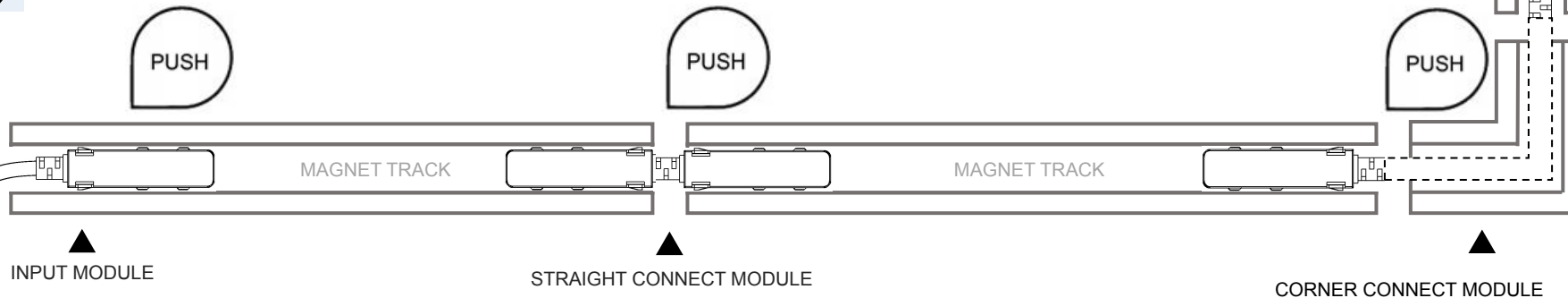
CORNER CONNECT MODULE



Line colors	In put
	+DC48V
	-DC48V
	+0-10V/+DALI
	-0-10V/-DALI

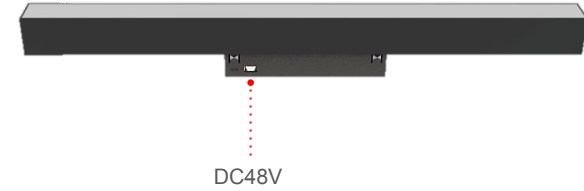
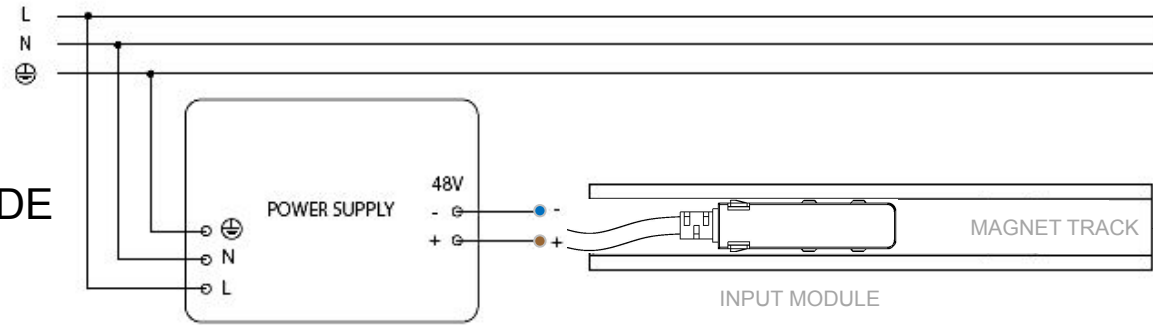


AC IN PUT

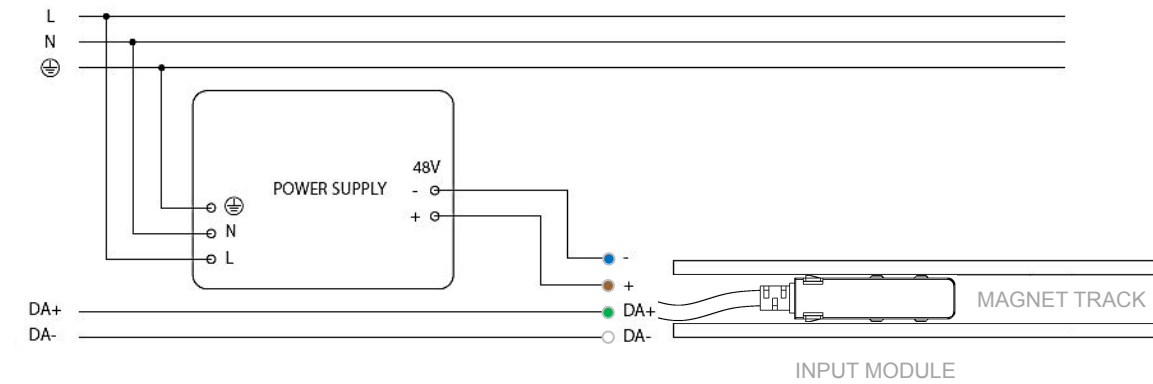


◆ REGULAR MODE

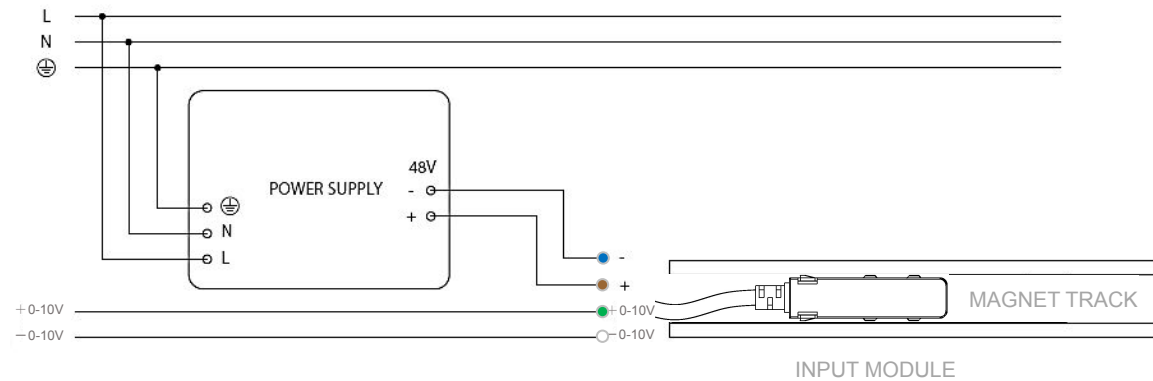
◆ BLUETOOTH MODE



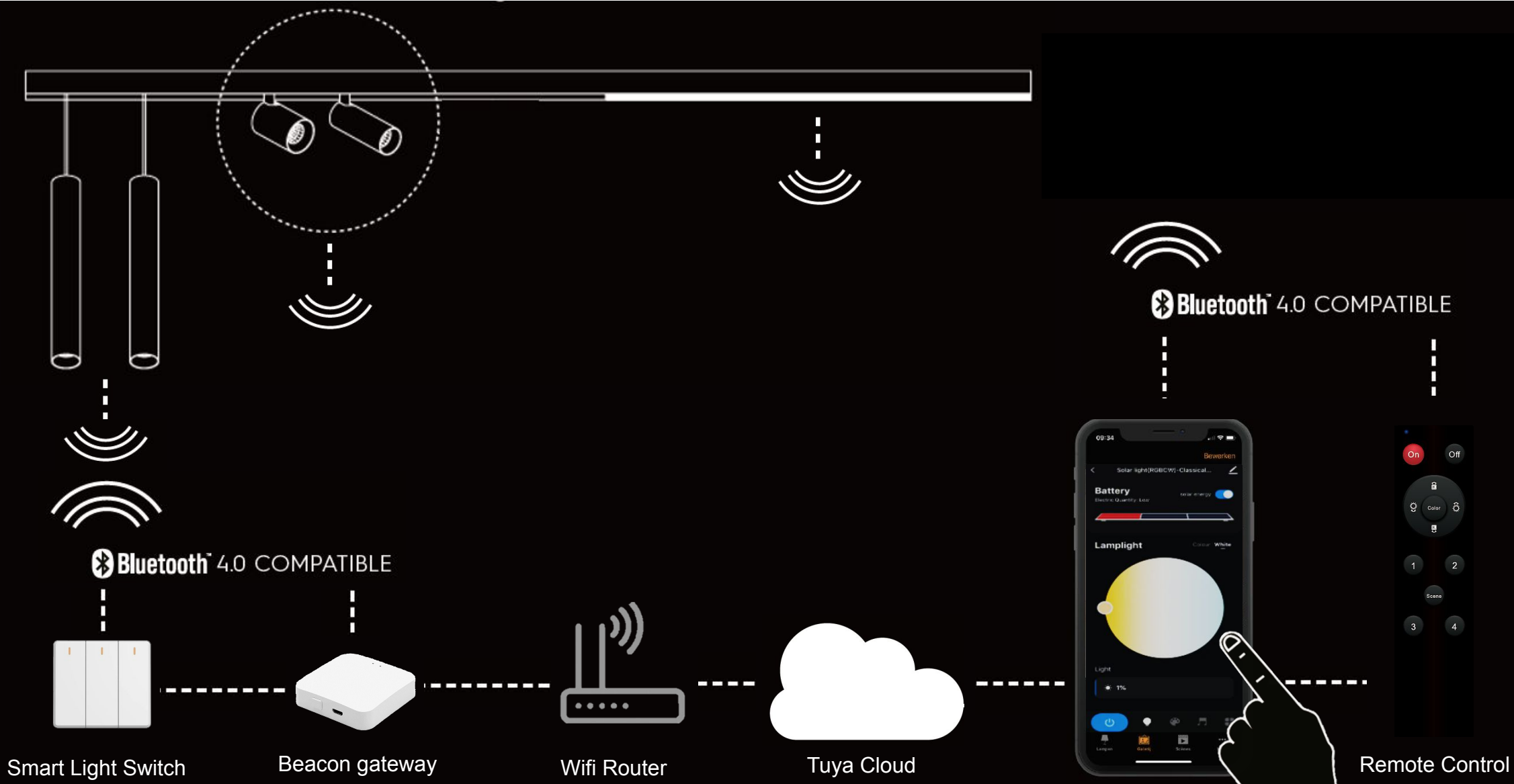
◆ DALI CONTROL



◆ 0-10V CONTROL



SMART LIGHT
SYSTEM



M20

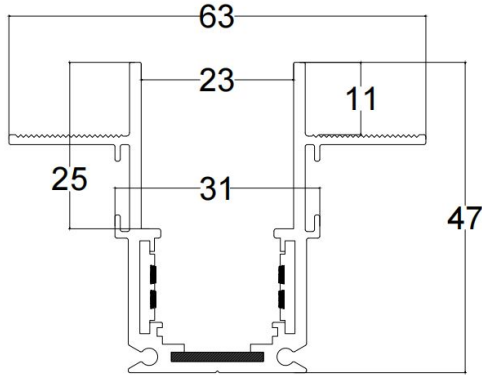
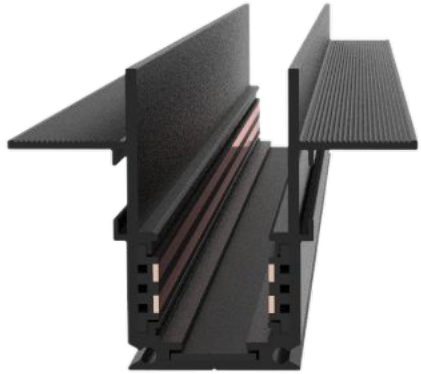
HOME USE

48V MAGNETIC TRACK

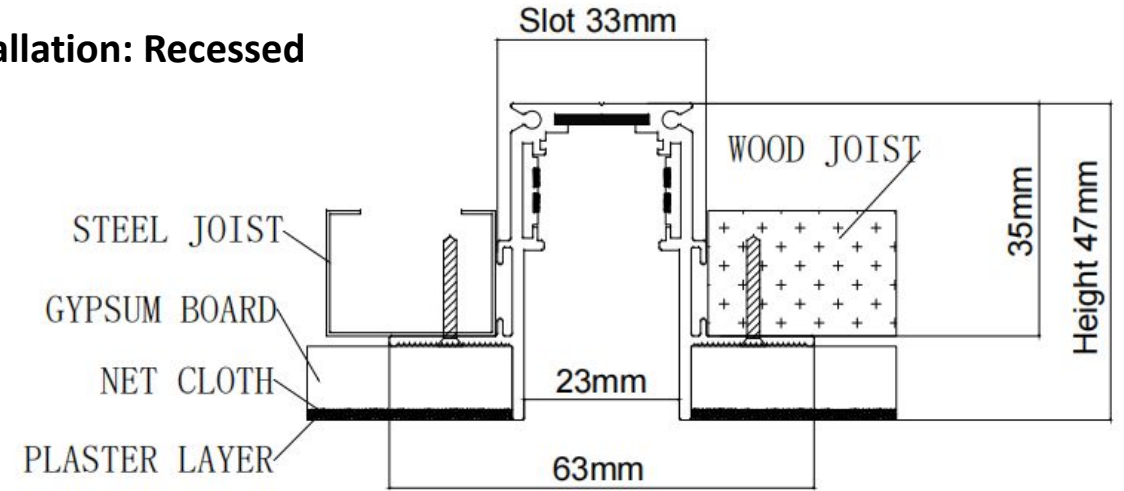
— SERIES —



20TRACK SERIE-TC20



Installation: Recessed



TC20 Corners

Thickness

1.8mm

Weight

1.1kg

Standard Length

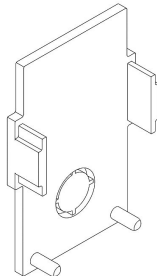
1000mm

1500mm

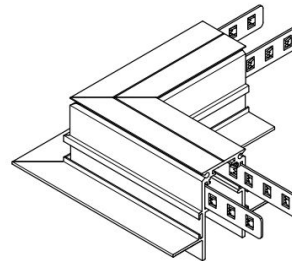
2000mm

3000mm

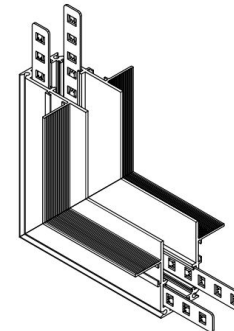
END CAPS



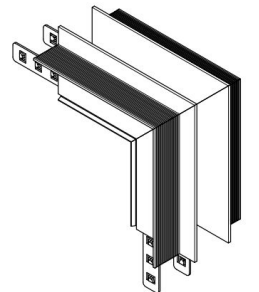
**90° corner
(C TO C)**



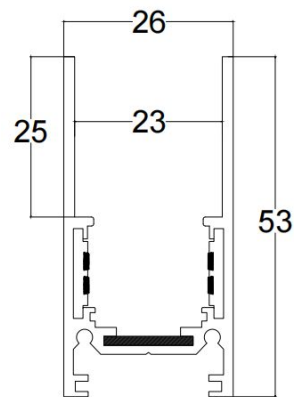
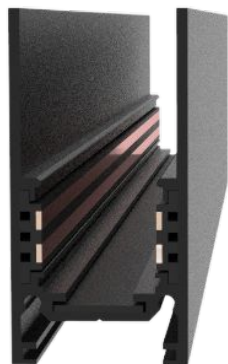
**90° corner IN
(C TO W)**



**90° corner OUT
(W TO W)**



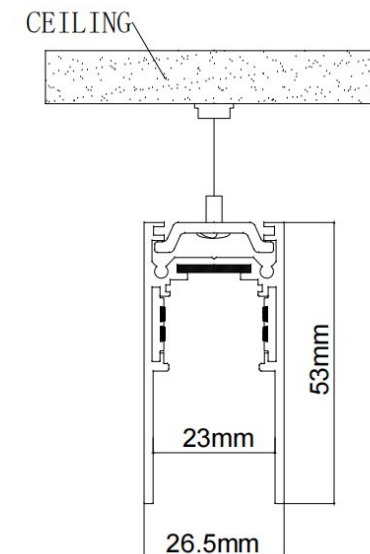
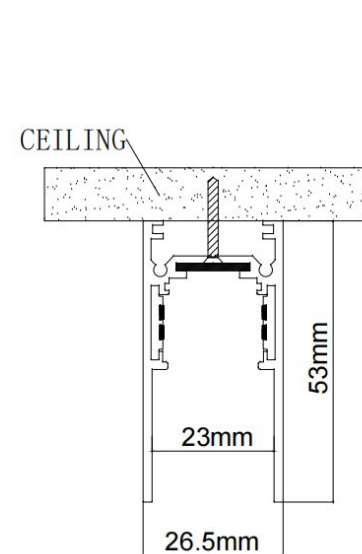
20TRACK SERIE-TH20



Installation:

SURFACE

SUSPENDED



TH20 Corners

Thickness

1.8mm

Weight

0.9kg

Standard Length

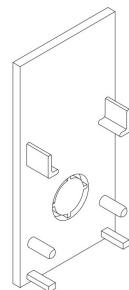
1000mm

1500mm

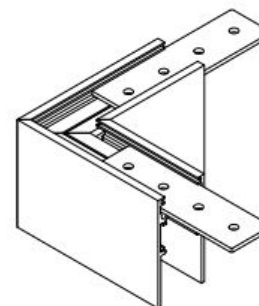
2000mm

3000mm

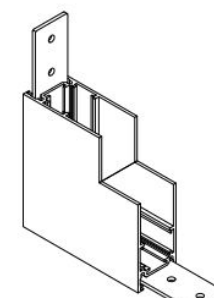
END CAPS



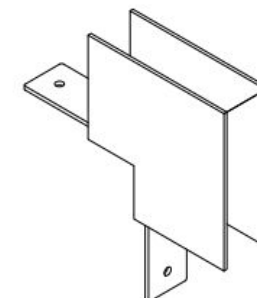
90° corner (C TO C)



90° corner IN (C TO W)



90° corner OUT (W TO W)



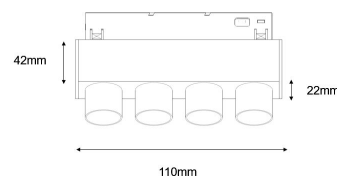
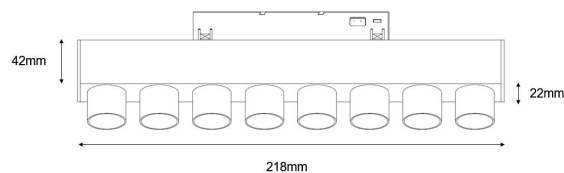
M20

Magnetic LED Spot Linear

new



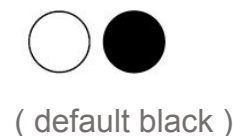
Types



◆ SP4 ◆ SP8

SP4	8W	110*22*42
SP8	16W	218*22*42

Colours



Beam angle : □ 15 ° ■ 30° □ 50°

CCT ○ 3000K ● 4000K □ 3000-5000K

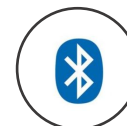
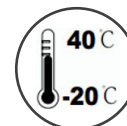
CRI : ≥ 92

Input Voltage : 48VDC

Structure : □ Adjustable ■ Fixed

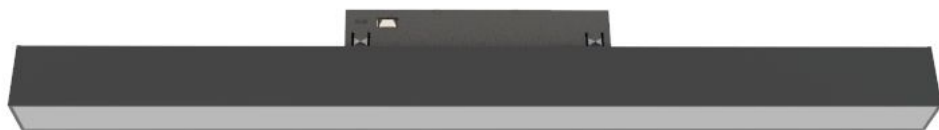
Ambient Temperature : -20°C ~ +40°C

Dimm/Control : □ 0-10V □ Dali □ Bluetooth □ Zigbee

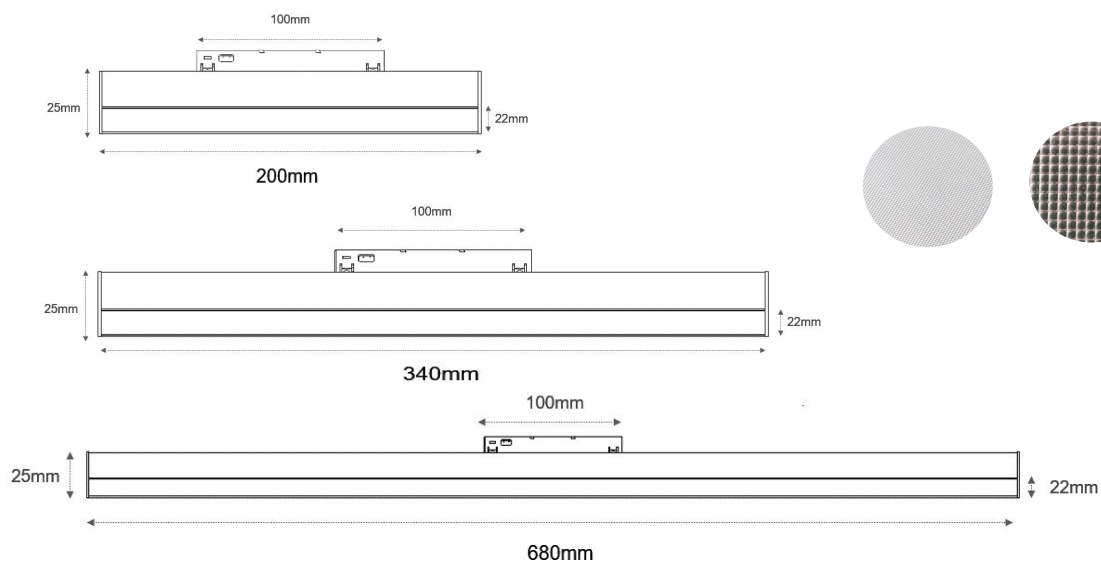


M20

Magnetic LED Diffused Linear



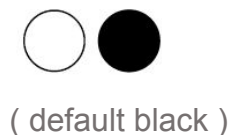
Types



◆ DF200 ◆ DF340 ◆ DF680



Colours



DF200	6W	200*22*25
DF340	12W	340*22*25
DF680	24W	680*22*25

Beam angle : 105°

CCT 3000K 4000K 3000-5000K



CRI : ≥ 92

Input Voltage : 48VDC

Structure : Adjustable Fixed

Ambient Temperature : -20°C ~ +40°C

Dimm/Control : 0-10V Dali Bluetooth Zigbee

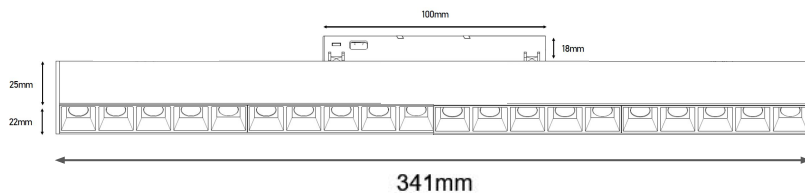
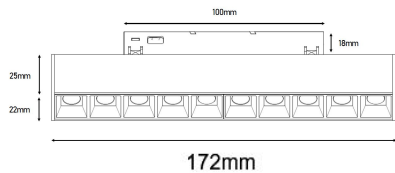


M20

Magnetic LED Spot Linear



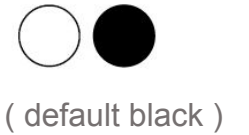
Types



◆ LB10 ◆ LB20

LB10	10W	172*22*25
LB20	20W	341*22*25

Colours



Beam angle : 30°

CCT 3000K 4000K 3000-5000K

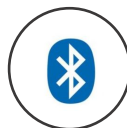
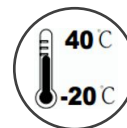
CRI : ≥ 92

Input Voltage : 48VDC

Structure : Adjustable Fixed

Ambient Temperature : -20°C ~ +40°C

Dimm/Control : 0-10V Dali Bluetooth Zigbee

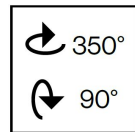
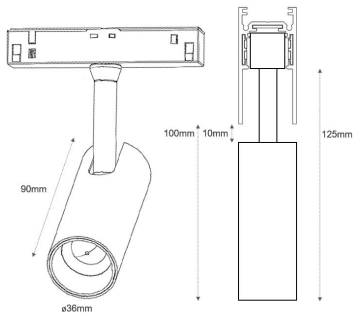


M20

Magnetic LED Spot Linear



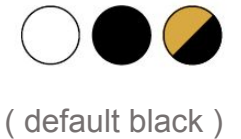
Types



◆ TL5 ◆ TL7

TL5	5W	ø36*90*12 5
TL7	7W	ø36*90*12 5

Colours



Beam angle : 24°
CCT 3000K 4000K 3000-5000K



CRI : ≥ 92
Input Voltage : 48VDC
Structure : Adjustable Fixed
Ambient Temperature : -20°C ~ +40°C
Dimm/Control : 0-10V Dali Bluetooth Zigbee

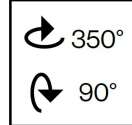
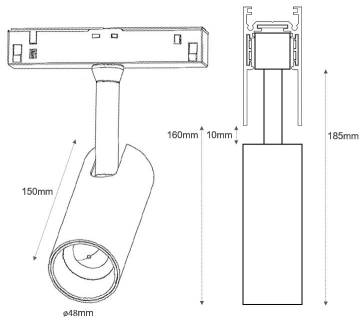


M20

Magnetic LED Spot Linear



Types



◆ TL9 ◆ TL12

TL9 9W ø48*150*18
5

TL12 12W ø48*150*18
5

Beam angle : 24°

CCT 3000K 4000K 3000-5000K

CRI : ≥ 92

Input Voltage : 48VDC

Structure : Adjustable Fixed

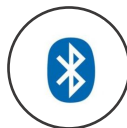
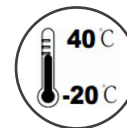
Ambient Temperature : -20°C ~ +40°C

Dimm/Control : 0-10V Dali Bluetooth Zigbee

Colours

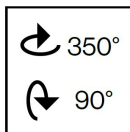


(default black)

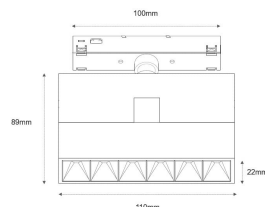
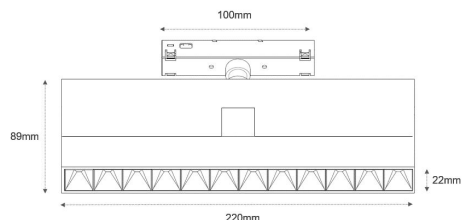


M20

Magnetic LED Spot Linear



Types



◆ FD6 ◆ FD12

FD6	6W	110*22*89
FD12	12W	220*22*89

Colours



(default black)

Beam angle : 30°

CCT 3000K 4000K 3000-5000K

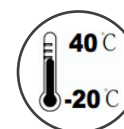
CRI : ≥ 92

Input Voltage : 48VDC

Structure : Adjustable Fixed

Ambient Temperature : -20°C ~ +40°C

Dimm/Control : 0-10V Dali Bluetooth Zigbee

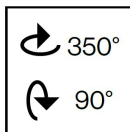
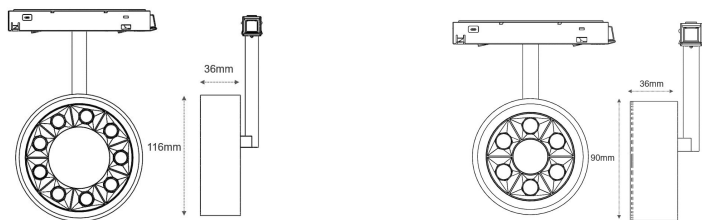


M20

Magnetic LED Spot Linear



Types



◆ RS6 ◆ RS9

			Colours
RS6	12W	ø90*36	●
RS9	18W	ø116*36	

Beam angle : 30°

CCT 3000K 4000K 3000-5000K

CRI : ≥ 92

Input Voltage : 48VDC

Structure : Adjustable Fixed

Ambient Temperature : -20°C ~ +40°C

Dimm/Control : 0-10V Dali Bluetooth Zigbee



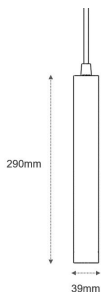
M20

M35

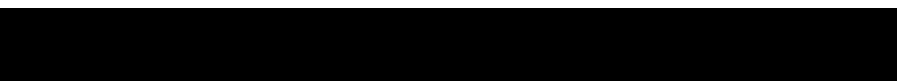
Magnetic LED Spot Linear



Types



◆ TB9W



TB9W 9W ø39*290

Colours



(default black)

Beam angle : 24°

CCT 3000K 4000K

3000-5000K



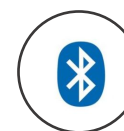
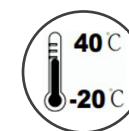
CRI : ≥ 92

Input Voltage : 48VDC

Structure : Adjustable Fixed

Ambient Temperature : -20°C ~ +40°C

Dimm/Control : 0-10V Dali Bluetooth Zigbee



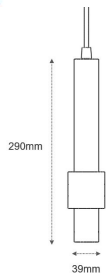
M20

M35

Magnetic LED Spot Linear



Types



◆ HG9W



HG9W 9W ø54*290

Colours



(default black)

Beam angle : 24°

CCT 3000K 4000K 3000-5000K

3000-5000K



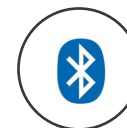
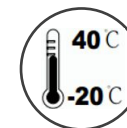
CRI : ≥ 92

Input Voltage : 48VDC

Structure : Adjustable Fixed

Ambient Temperature : -20°C ~ +40°C

Dimm/Control : 0-10V Dali Bluetooth Zigbee



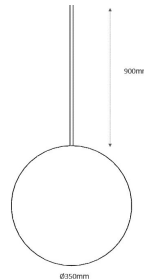
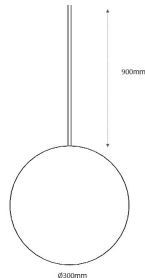
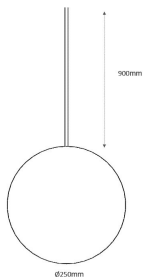
M20

M35

Magnetic LED Diffused Linear



Types



◆ MN25 ◆ MN30 ◆ MN35

MN25	24W	ø250
MN30	24W	ø300
MN35	24W	ø350

Beam angle : 340°

CCT  3000K  4000K

CRI : >80

Input Voltage : 48VDC

Structure : Adjustable Fixed

Ambient Temperature : -20°C ~ +40°C

Dimm/Control : 0-10V Dali Bluetooth Zigbee

